
GreenPoint, Inc.

WebCharts3D Eclipse IDE Plugin

March 18, 2007

Table of Contents

1.0 INTRODUCTION.....	3
SCOPE	3
REQUIREMENTS.....	3
2.0 INSTALLATION.....	4
3.0 CREATING CHARTS	5
4.0 MODIFYING CHARTS.....	8
5.0 PLUGIN PANELS	9
XML STYLE	9
XML MODEL.....	9
CODE VIEW.....	10
PREVIEW	10
HELP	10

1.0 Introduction

Scope

This document describes WebCharts3D Designer Plugin for Eclipse IDE. An open extensible IDE, Eclipse has already been deployed on a range of development workstations including Linux, QNX, Mac OS X and Windows-based systems.

WebCharts3D Designer plugin for Eclipse is a visual chart designer capable of creating and modifying standard WebCharts3D project files (*.wcp).

Requirements

The plugin requires Eclipse 3.1.x or 3.2.x with JVM v1.4 or above. We recommend using Sun's Java especially on Linux/Unix. The plugin does not work correctly with GNU gij provided as part of Fedora Core. You can specify a different VM in eclipse launch command by typing:

```
eclipse -vm <path to JVM>
```

or by specifying -vm parameter in eclipse.ini file.

2.0 Installation

To install the plugin:

1. From Eclipse workbench select menu option Help - Software Updates - Find and Install.
2. Select "Search for new features to install" option. Click "Next".
3. Click "New local site" and locate **eclipse** folder in the installation directory. Click Ok.
4. Expand "Web Charts 3D" site to see "Web Charts 3D" feature. Select both "WebCharts 3D" checkboxes. Click "Next".
5. Select "WebCharts 3D for Eclipse" feature checkbox. Click on the "Properties" button if you would like to learn more about the product. Click "Next" to continue installation.
6. Please read license agreement carefully. Select "I accept the terms in the license agreements" if you accept those terms. Click "Next" to continue installation.
7. Click "Finish" to install the "Web Charts 3D for Eclipse" feature.
8. Click "Install" on jar verification screen. Eclipse will now download and install the feature.
9. After an installation process is complete Eclipse suggests to restart itself. Click "Yes" to restart Eclipse workbench.

Once the plugin is installed you can register it by entering Designer's license key:

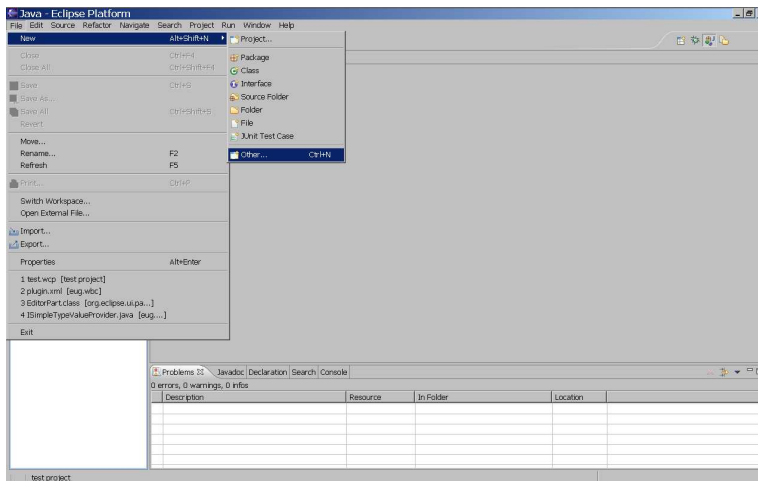
1. Open Preferences dialog by selecting Preferences from Window menu.
2. Locate WebCharts3D panel and enter the license key.
3. Press OK.

3.0 Creating charts

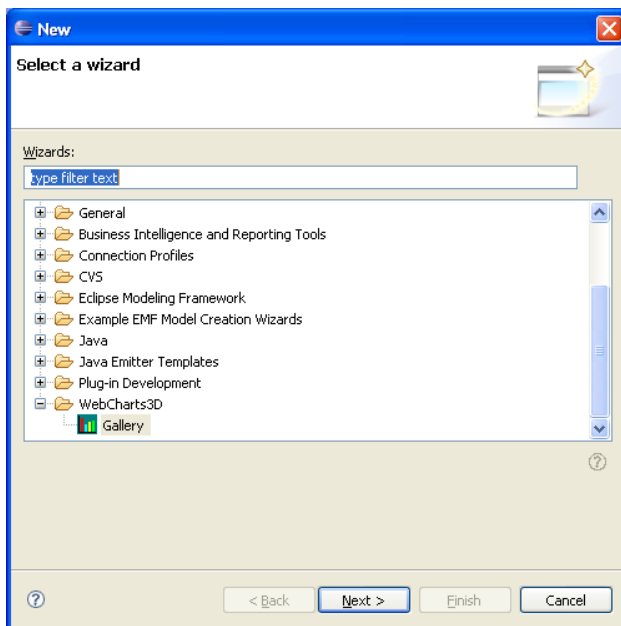
In order to create a chart you need to have a project. If you do not have a project, create a new one by selecting File→New Project menu item, and then selecting Simple Project in the the New Project dialog.

To create a new chart:

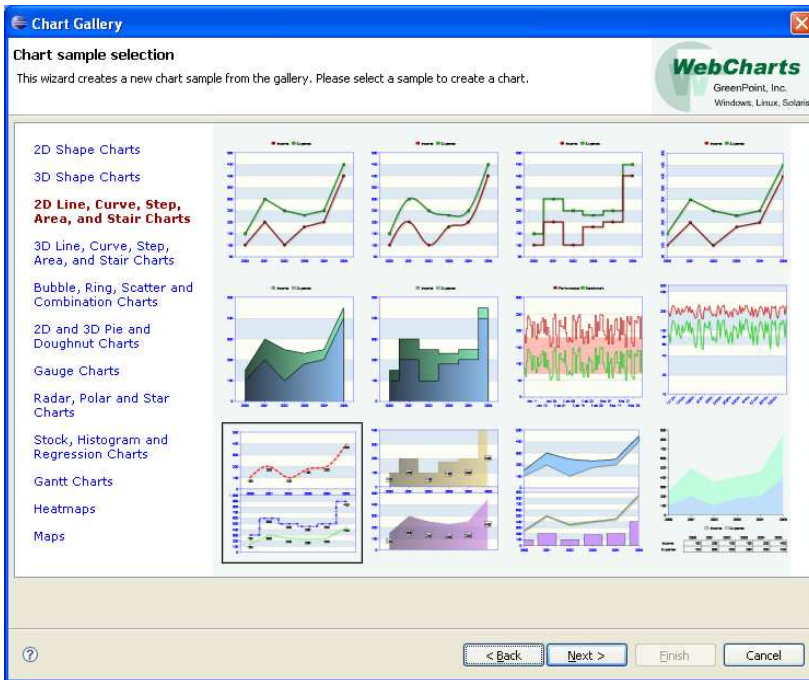
1. Select File→New→Other in Eclipse menu or press Ctrl-N.



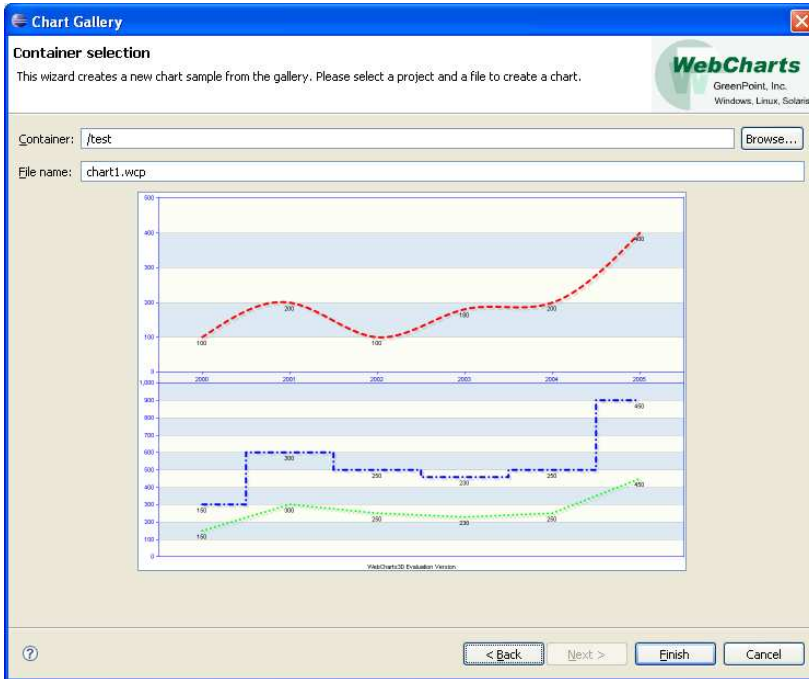
2. Select “WebChart3D” → “Gallery”. Click “Next” button.



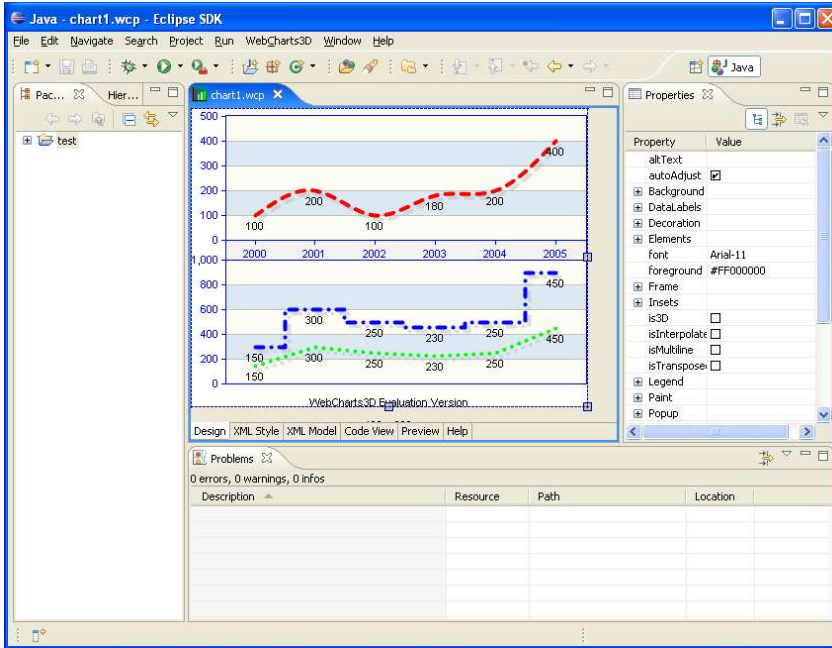
3. In Chart Gallery select a chart prototype by clicking on a chart description on the left side and then on the desired chart. Click “Next” button.



4. Select Container (use “Browse” button for convenience) for the new chart and enter a file name.

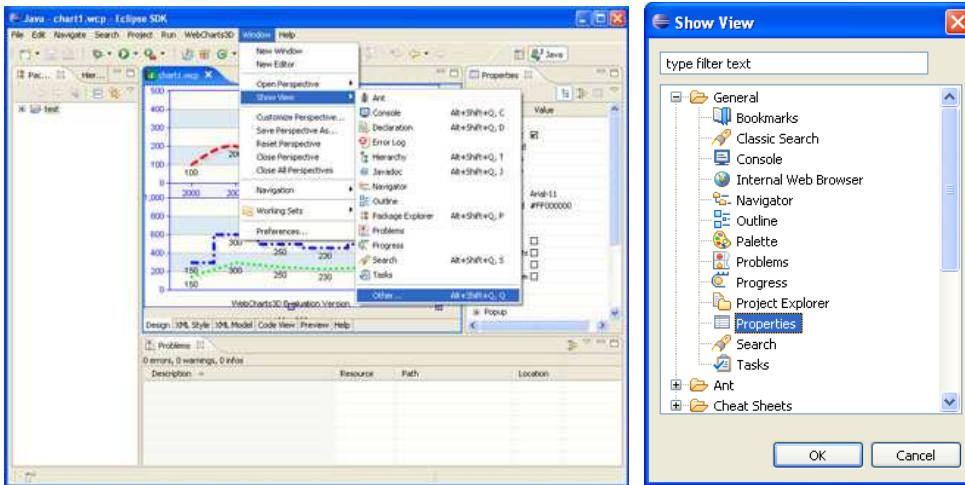


5. Click “Finish”. The following picture should be displayed:

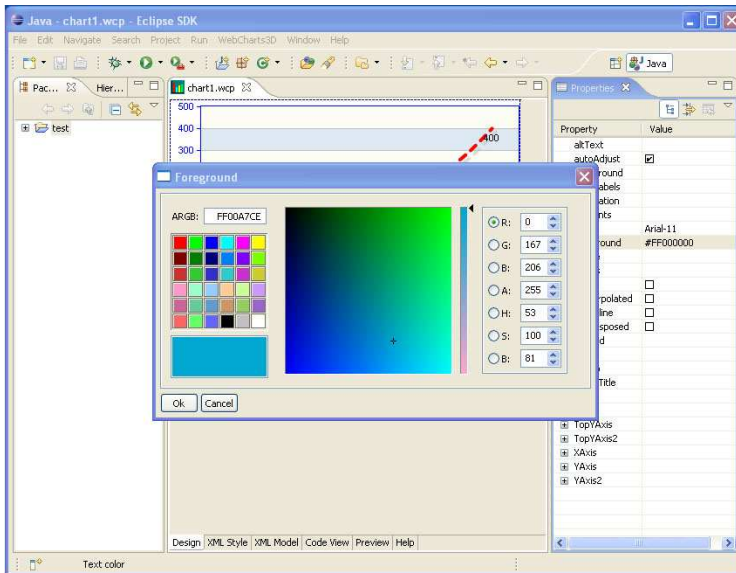


4.0 Modifying charts

1. Create a new chart or open one of the existing ones. If Properties view was not open, open it by using Window-Show View-Other menu, and then selecting Properties from “Show View” dialog. Once Properties View is visible you can use your mouse to drag it to a convenient location.



3. At this point you can modify your chart by changing its properties.



4. Use “File→Save” and “File→Save As” menu commands to save chart after it was modified.

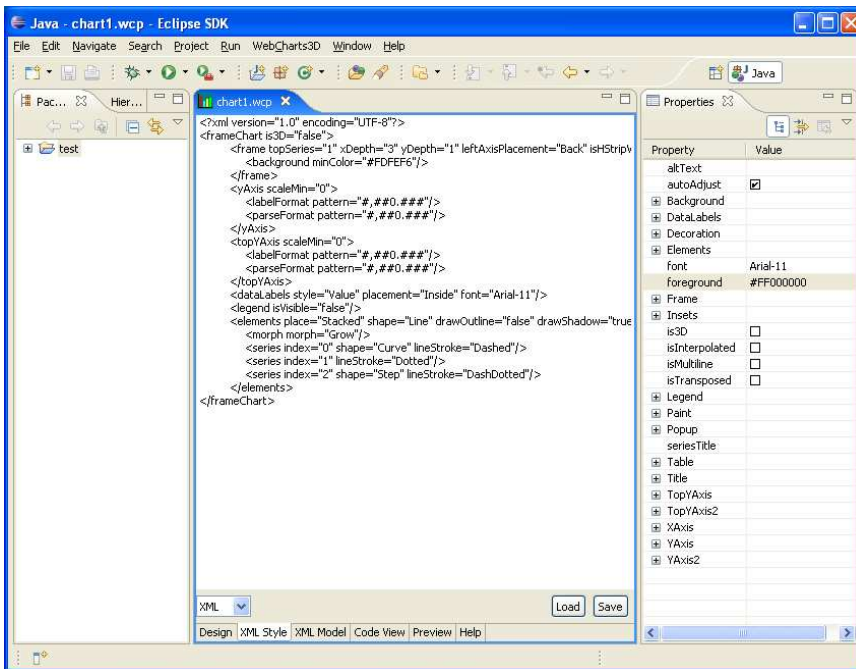
5.0 Plugin panels

WebCharts3D components require chart's style and model in order to produce charts. Both style and model objects have XML representation and can be easily persisted and restored.

XML Style

WebCharts3D plugin for Eclipse can help you to design chart's style. You can view the style in XML format (as well as its DTD, XSD and Java representation) by clicking on "Xml Style" tab located at the bottom of the Designer's view. You can also see all code required to create Java style object by using drop-down formats list.

When the content of the Xml pane is modified "Apply" and "Reset" buttons appear. You can use these buttons to apply current XML text to the current chart document or to reconstruct XML text from the current chart document state. You can use "Load" and "Save" to load and save XML style to and from the files. Note that modifying properties in Properties view will immediately affect this pane.



XML Model

You can view and modify the model used by the current chart by clicking on "Xml Model" tab located at the bottom of the Designer's view. Similarly to "Xml Style" view

this view allows you to modify XML and import/export it to the files by using “Load” and “Save” buttons.

To learn how to bind charts to databases and files please refer to the Developer’s Guide or use full version of the Designer.

Code View

WebCharts3D plugin will automatically generate all code required to insert WebCharts3D into a JSP or JSF page, or to include it as part of the Swing or SWT client. To view the code, switch to Code view by clicking on the “Code” tab located at the bottom of the Designer’s view and select the appropriate platform from “Platform” combobox. You can use “Copy” and “Paste” commands to export source code into other editors and applications.

Since the plugin currently does not support database or file binding, you’ll need to modify the generated code manually in order to do so. Alternatively you can use full version of the Designer to automatically produce code bound to a datasource.

To learn more about requirements, setup, API functions and XML formats please refer to Developer’s Guide included with this product.

Preview

“Preview” panel allows you to preview the chart in a browser. To select the desired format scroll the browser window to the bottom and click on one of the hyperlinks. Your browser needs to have the corresponding plugins installed in order to view Flash, SVG, PDF and TIFF formats.

Help

WebCharts3D plugin provides help inside “Help” pane since parts of the manual are produced by the code inspection and shares this functionality with stand-alone Designer.