

WebCharts3D v5.0

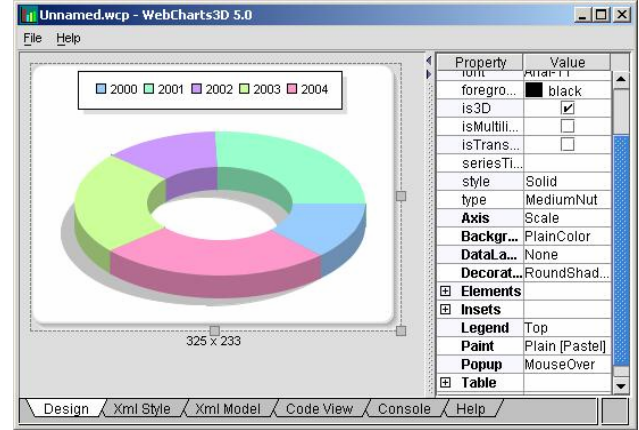
Integrated charting solution

WebChart3D is a state of the art visualization package designed for the professional software developers who work with JSP and/or Swing interfaces. In just a few minutes you can create the chart, table or heatmap you need, connect to your data source, integrate required code inside your web page, and view it in the browser.

Powerful Chart Designer

WebCharts3D Designer saves development time and reduces the learning curve by providing an intuitive GUI to the chart development process.

- **Build complex charts easily using design pane** – no more time consuming manual coding of charts styles.
- **View chart's style in XML or Java formats**– full chart style's description together with XSD schema and DTD are automatically produced.
- **Connect easily to your data source** and see the results of the query in table and chart formats.
- **Preview your chart in the browser** using the embedded chart generation HTTP server.
- **Deploy the page to your web server or embed the chart into Swing application** using code generation panel.



Flexible Chart Styles

WebCharts3D Designer gives you full control over every possible chart style and allows you to design the chart entirely in WYSIWUG mode. The product supports multiple chart types including Bar, Line, Area, Curve, Pyramid, Prism, Step, Band, Floating Bars, Scatter, Box-Whisker, Bubble, Ring, Stock, Pie, Doughnut, Radar, Dial and others. You can customize each of the chart elements, define palettes, colors, gradients, transparencies, axes scales, formats and titles, frame rotation and decoration, legend placement and alignment, mix different elements within a single chart, and create parameterized annotations and event handlers. The designer can be easily incorporated into your own applications to provide your end-users with chart editing capabilities.

Powerful server component

WebCharts3D server-side component can generate interactive animated charts in a variety of formats including PNG, JPEG, Flash, SVG, PDF, TIFF and WBMP. The server-side charting engine incorporates sophisticated caching and resource management algorithms that allow the product to provide high performance even in the most demanding environments. Fully multithreaded, the component can serve multiple requests at the same time and will optimize the server performance by maintaining a cache of the recently served images.

Native Swing Bean

WebCharts3D Swing component can be used to present charts for the end-users in rich client environments, or as an applet in the browser. In addition to displaying charts, this component provides a number of interactive features that can be employed by the end-user to adjust the chart's presentation. Both Swing component and server-side components use the same XML formats and API.

The WYSIWYG approach reduces the learning curve and enables a person without any special training to create comprehensive pages within a short period of time

Xml Style and Model representations

WebCharts3D employs native XML representation of the chart's styles and data. The XML representations of the style and model make WebCharts3D an ideal solution for web based applications. Powerful API allows you to instantiate or to serialize these objects as XML and dynamically change both chart's style and model.

Automatic code generation and deployment

WebCharts3D Designer will automatically produce the code for the specified chart styles and data source. WebCharts3D can utilize databases, delimited files and XML files as data sources. Once the data source is bound to the chart you can save the code required to produce this chart on the server directly into your web application.

